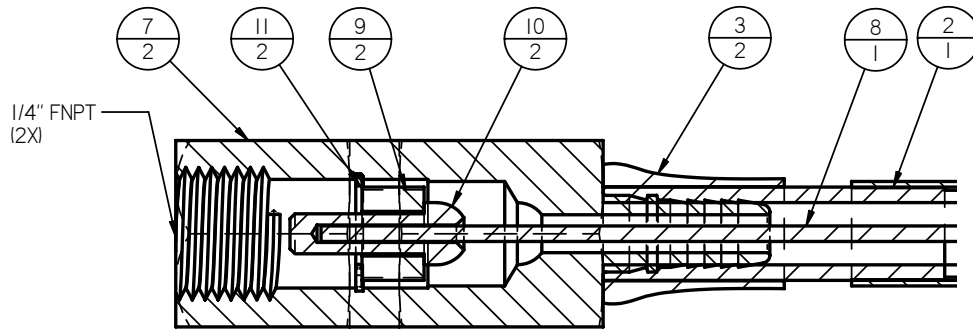


NOTES:

1. ALL NOTES AND CIRCLED DIMENSIONS ARE CRITICAL INSPECTION FEATURES.
2. ALL DIMENSIONS ARE SYMMETRICAL ABOUT THE CENTERLINE UNLESS OTHERWISE SHOWN.
3. BREAK ALL SHARP EDGES R.005", UNLESS OTHERWISE SHOWN.
4. ALL NPT THREADS SHALL BE CUT WITH MINIMUM TRUNCATION. INTERNAL NPT THREADS SHALL BE INSPECTED USING A STANDARD THREAD GAUGE & NPT/ANPT SIX-STEP PLUG GAUGE TO INSURE FULL HEIGHT THREADS.

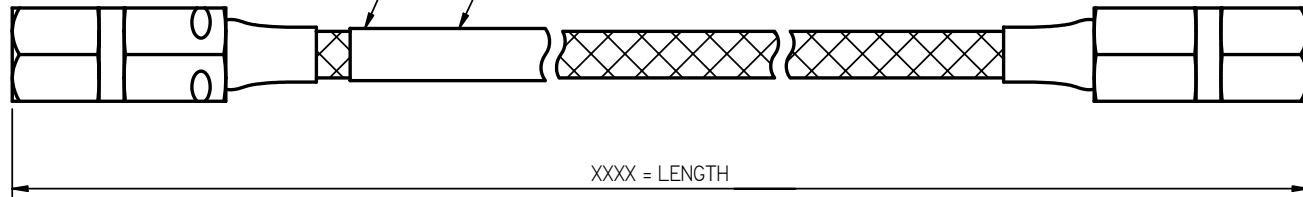
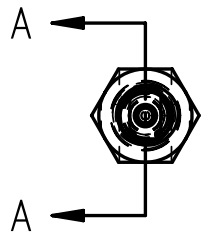
Item	Part Number	Title	Material	Qty.
2	1121550	1/4" 3500 PSI HOSE	PTFE/304-SS	1
3	3020133	3500 PSI FERRULE	304-SS	2
4		LABEL W/ SHRINK TUBING		1
7	2011190	LLI-025 FITTING, TF11505, 3000/3500 PSI, SMOOTH TEFLON/TEFZEL	BRASS	2
8	5000025	062 CABLE	316-SS	1
9	2013025	LLI-025 RETAINER BLOCK	BRASS	2
10	2012020	LLI-025 Valve	BRASS	2
11	4010025	SNAP RING, HO-43 (ROTOR CLIP)	BrCu	2



SECTION A-A

TAG INFORMATION

SMART HOSE TECHNOLOGIES
MFG DATE: MM/YY SERIAL # XXXXX
MAX WP 240 BAR 3500 PSIG
REQUAL BY MM/YY PAT # 5,357,998
OXYGEN & INERT GAS
FLOW PATH CLEANED FOR O2 USE



TOLERANCES:
.X = ± .030
.XX = ± .010
.XXX = ± .005

UNLESS OTHERWISE NOTED.

DRAWN BY RDC	DATE 6/3/2011
APPROVED: <i>RDC</i>	DATE 2/22/2010



TITLE: 025" FNPT PIGTAIL ASSY, PTFE, 3500 PSI			
SHEET: 1	MTRL:	DWG. NO. P02-002-17-XXXX-0-00-00	REV. --

REV.	DATE	DESCRIPTION	BY
---	-----		