

High Quality
Best Service
Needle Valve
Art

DIXON Valves

IMFLUID Ltda.

Compañía N° 1973, Santiago, Chile

Central (fax) : 56-02-6967479

MODEL NO : Aginox-6000

- * Investment Casting Needle Valve
- * Working Pressure : 6000 PSI / WOG
- * Threaded Ends (NPT)
- * Screwed-In Bonnet With Metal-To-Metal Fire-Safe Design.
- * The Needle Valve Is Ideal For Effective Control Of High Pressure Oil And Steam.
- * Rising Stem ; T Handle Operation..
- * Stem Packing : PTFE (to 180°C)
25% Graphite+PTFE (to 260 °C)
Carbon Fiber (to 500°C)
- * Hydraulic test : 9000 psi OUT OF ORDER
- * Size : 1/8" ~ 1"

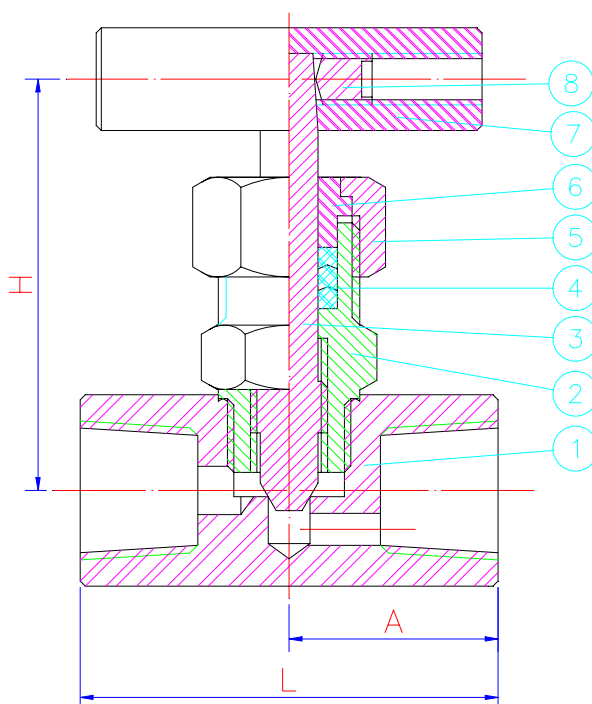


Dimensions List :

Size	A	L	H
1/8"	29	58	75
1/4"	29	58	75
3/8"	29	58	75
1/2"	32.5	65	87
3/4"	35	70	90
1"	40	80	103

Material List :

No	Parts Name	Specification
1	Body	ASTM A351 GR.CF8M
2	Bonnet	ASTM A351 GR.CF8M
3	Stem	SS316
4	Stem packing	PTFE
5	Gland Nut	SS304
6	Gland	SS304
7	Handle	SS410
8	Set Screw	SS304



We hereby reserve the rights of any alternative dimension that would help to improve our valve's quality and working efficiency